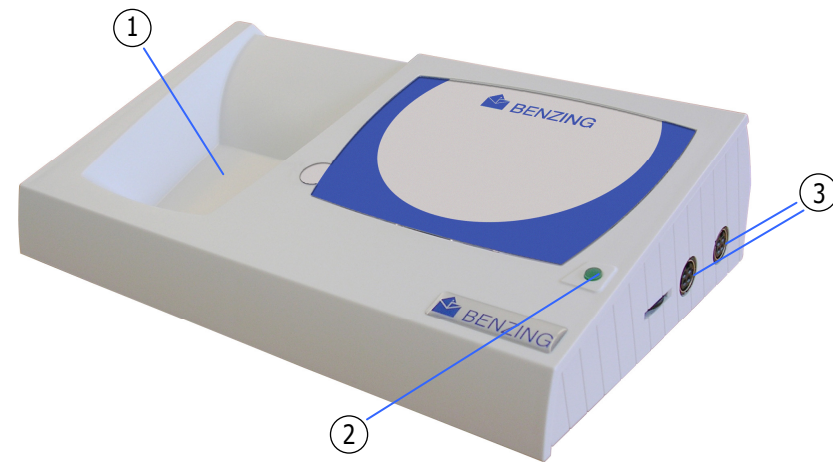


1. General

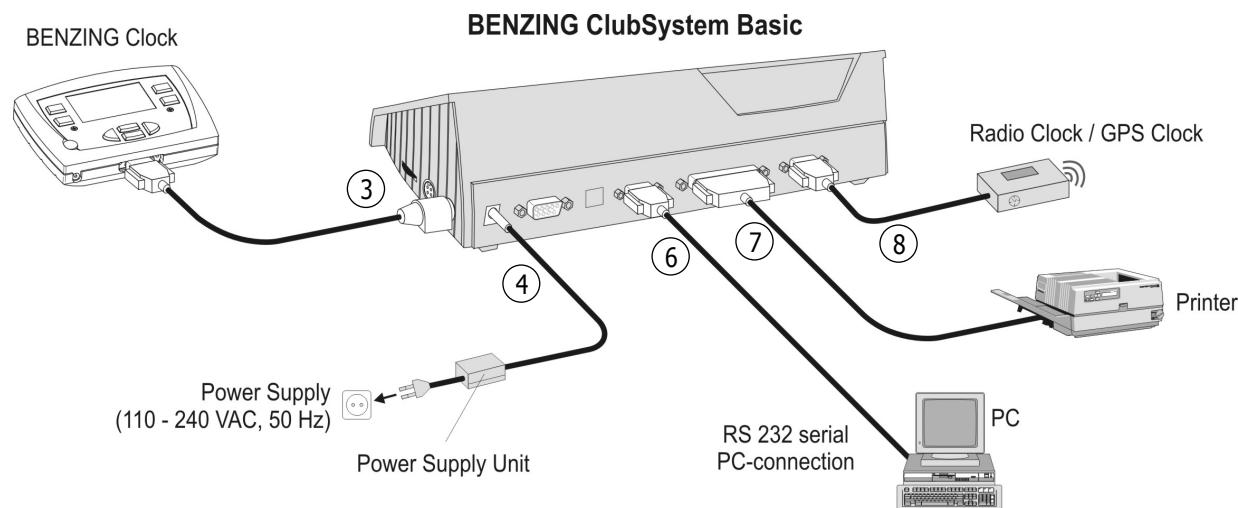
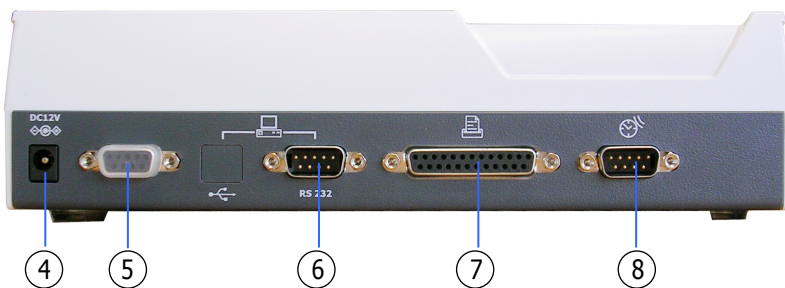
This is a short description to get started with the BENZING ClubSystem Basic. This device combines the functionalities of the old club antenna CAN and the clubPOINT into a single unit.

The usage of the fancier clocks stays totally the same as with the old club sets. For more information please refer to the BENZING club manuals.

2. Connection of the BENZING ClubSystem Basic

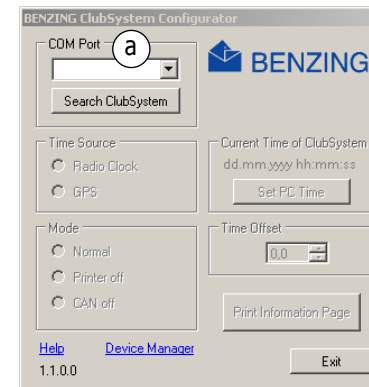


- ① Antenna field for reading the chip rings
- ② Status light
- ③ PMDIN socket to connect the BENZING clocks
- ④ Plug for the 12 V BENZING power supplies
- ⑤ DB9 connector to connect the BENZING clocks (optional)
- ⑥ RS 232 interface (COM port) for PC connection
- ⑦ Connection for standard parallel printers
- ⑧ Plug to connect radio clock or GPS clock

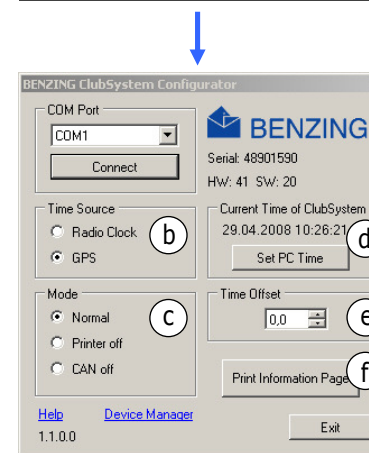


3. Settings of the BENZING ClubSystem Basic

By default the BENZING ClubSystem Basic is configured to work with a radio clock. To use a GPS time source it's required to change the settings of the BENZING ClubSystem Basic with the BENZING ClubSystem Configuration Software. Connect the BENZING ClubSystem Basic to a serial COM port of your PC with the RS 232 cable at connector ⑥. Then connect the BENZING ClubSystem Basic to power ④. Start the BENZING ClubSystem Configuration Software (you find this software on the BENZING Utility CD supplied with the BENZING ClubSystem Basic).



- a **COM Port:**
Select the COM port where the BENZING ClubSystem Basic is connected. You can click on the button "Search ClubSystem" to automatically search for the connected BENZING ClubSystem Basic. You can also choose the COM port directly from the drop down list.



- b **Time Source:**
Here you can choose if you have a radio clock or a GPS time source connected at ⑧.
- c **Mode:**
Here you can choose different special modes to switch off the CAN function or the printer port. This is only used for special functions and should be set to "Normal" for regular operation.
- d **Current Time of ClubSystem:**
Here you can see the current time of the BENZING ClubSystem Basic. You can also transfer the current time of your PC to the BENZING ClubSystem Basic by clicking on the button "Set PC Time"
- e **Time Offset:**
Here you can set a time offset for the GPS clock according to your time zone.
- f **Print Information Page:**
With this function you can print out the Information Page of the BENZING ClubSystem Basic with a printer connected to the BENZING ClubSystem Basic at connector ⑦.

Setting the time:

- **Automatically:**
If a radio or GPS clock is connected then the BENZING ClubSystem Basic will set the correct time automatically.
- **Manual time set with the BENZING clocks:**
In the System menu of the BENZING clocks you can set the time of the BENZING ClubSystem Basic.
- **Manual time set with the BENZING ClubSystem Configuration Software:**
See point "Current Time of ClubSystem" above.

4. Important Notices



The internal time of the BENZING ClubSystem Basic will hold true for about 2 weeks, even if the BENZING Club System Basic gets disconnected from the power supply.



Make sure that the date and time set in the BENZING ClubSystem Basic is always correct.